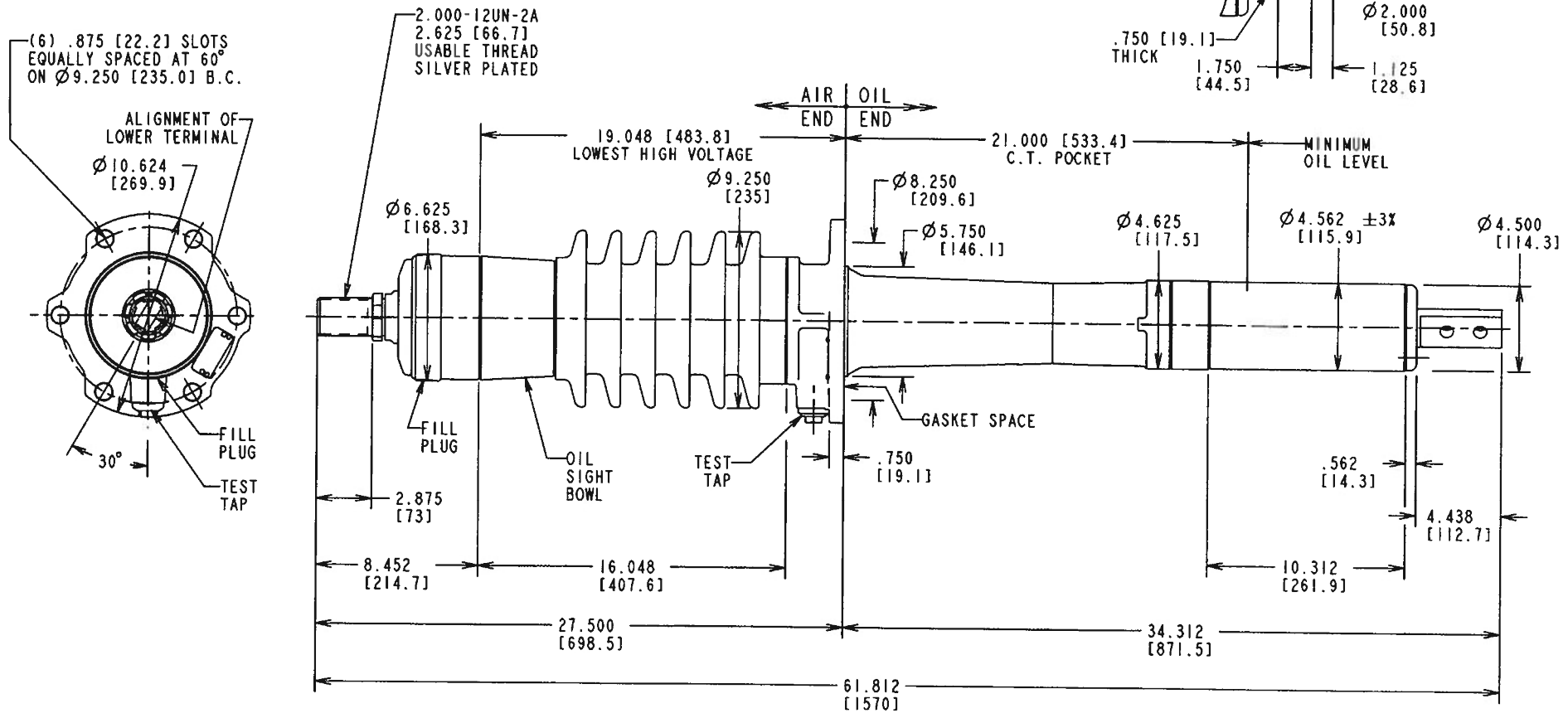


SPECIAL FEATURES: NONE



WE RESERVE ALL RIGHTS IN THIS DOCUMENT AND IN THE INFORMATION CONTAINED THEREIN. REPRODUCTION, REPRODUCTION, USE OR DISCLOSURE TO THIRD PARTIES WITHOUT EXPRESS AUTHORITY IS STRICTLY FORBIDDEN. © ABB.

STYLE NO.	CATALOG NO.	OUTER INSULATING ENVELOPE COLOR	INSULATION CLASS kV	BASIC IMPULSE LEVEL kV	MAX. LINE TO GROUND VOLTAGE kV	CONNECTION METHOD AND CONTINUOUS CURRENT A @ 60Hz		MINIMUM CREEP DISTANCE in. / [mm]	MINIMUM ARCING DISTANCE in. / [mm]	MAXIMUM ALTITUDE ft / [m]	MOUNTING ANGLE FROM VERTICAL deg	APPROX. WEIGHT lb / [kg]	
						DRAW-LEAD	INBOARD END						
034W2000BA	W17B350BB	GRAY	34.5	200	22	N/A	2000	N/A	31.188 [792]	16.048 [408]	10000 [3048]	0 TO 60	101 [45.8]
034X2000BA	W17B350	BROWN											

NO. & LOC.	REVISIONS
1	D-4A0543 REDRAWN ON CADD WITH DIMENSIONAL CORRECTIONS; REPLACES PART OF P3948B596 W. A. SHINER 10-22-98
2	D-4A0506 V02 CHG GLASS TO EPOXY SIGHT BOWL J. ARMIGER 06/25/03 D. GEIBEL 12/09/03
3	ADDED 19.048 LOWEST HIGH VOLTAGE DIM M. WILLIAMS 03/23/07 S. PERKINS 03/26/07
4	LOWER TERMINAL 4.250 WAS "0". 1.125 WAS "E". PERKINS 03/28/08 WILLIAMS 03/28/08

PRINTS TO:			ABB Inc. ALAMO, TN U.S.A.		
1	7	13	TITLE:		
2	8	14	TYPE O Plus C™, IEEE, CONDENSER BUSHING		
3	9	15	RESP. DEPT.:	BUSHINGS	
4	10	16	DFTR:	W.A. SHINER	
5	11	17	DATE:	22-Oct-98	
6	12	18	UNITS =	in. / [mm]	
REF:	APPD:	SCALE =	0.250	DRAWING NO:	T034W2000BA
		LANG. =	ENGLISH	REV.:	4
				SHEET	1 OF 1